

JULY	Mins	THU 2	FRI 3	SAT 4	SUN 5	MON 6	TUES 7	WED 8
<b>MOANA (LIVE ACTION)</b> PG - mild threat	120							11.00am
<b>TOY STORY 5</b> G: Very mild bullying themes and violence	105	⊕ <b>6.00pm</b>	7.15pm	11.15am ⊕ <b>3.00pm</b>	⊕ <b>11.15am</b> 3.00pm	11.30am ⊕ <b>3.45pm</b>	⊕ <b>10.30am</b> 2.30pm	1.30pm 4.00pm
<b>MINIONS &amp; MONSTERS</b> PG - mild threat, violence & coarse language	110	4.30pm	12.45pm 5.10pm	⊕ <b>10.45am</b> ⊕ <b>12.50pm</b>	10.45am 12.50pm	⊕ <b>11.00am</b> 2.00pm	10.00am 5.00pm	⊕ <b>10.30am</b> ⊕ <b>3.15pm</b>
<b>SUPERGIRL</b> M - mature themes & violence	110	⊕ <b>3.35pm</b> 6.30pm	2.45pm ⊕ <b>7.00pm</b>	4.15pm ⊕ <b>7.45pm</b>	⊕ <b>1.45pm</b> 5.20pm	⊕ <b>1.15pm</b> 6.45pm	12.05pm 7.45pm	⊕ <b>12.45pm</b> 7.15pm
<b>TUNER</b> MA15+	110	⊕ <b>1.15pm</b>	⊕ <b>4.30pm</b>	⊕ <b>5.25pm</b>	7.45pm			
<b>DISCLOSURE DAY</b> M	150	1.30pm	⊕ <b>1.30pm</b>	7.00pm	⊕ <b>6.45pm</b>	⊕ <b>6.15pm</b>	⊕ <b>1.00pm</b>	
<b>THE SHEEP DETECTIVES</b> PG	115			1.45pm	⊕ <b>4.20pm</b>	4.15pm	⊕ <b>4.00pm</b>	

PLEASE NOTE: ALL SESSIONS ARE CORRECT AT TIME OF PUBLICATION BUT MAY BE SUBJECT TO CHANGE.

⊕ + Times in bold denote wheelchair access.

👁 Denotes sensory friendly screenings.

⊕ Denotes Open Captioned sessions.

\* Denotes Coffee Session.

Feature begins approximately 5 to 10 minutes after the advertised screening time. Doors open approximately 30 mins before the day's first session.

**MOANA: LIVE ACTION (PG)** 120 Mins *Adventure*

In Disney's live-action adaptation of the beloved Oscar®-nominated animated adventure, Moana (Catherine Laga'aia) answers the Ocean's call and, for the first time, voyages beyond the reef of her island of Motunui with the infamous demigod Maui (Dwayne Johnson) on an unforgettable journey to restore prosperity to her people.

**TOY STORY 5 (G)** 105 Mins *Adventure*

The toys are back and this time, Buzz Lightyear, Woody, Jessie and the rest of the gang's jobs are challenged when they come face-to-face with Lilypad.

**MINIONS & MONSTERS (PG)** 95 Mins *Animated*

This is the rambunctious, ridiculous and totally true story of how the Minions conquered Hollywood, became movie stars, lost everything, unleashed monsters onto the world and then banded together to try and save the planet from the mayhem they had just created.

**SUPERGIRL (M)** 110 Mins *Action*

When an unexpected and ruthless adversary strikes too close to home, Kara Zor-El, aka Supergirl, reluctantly joins forces with an unlikely companion on an epic, interstellar journey of vengeance and justice.

**TUNER (MA15+)** 110 Mins *Crime, Thriller*

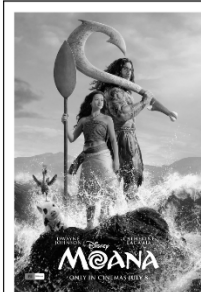
With his once-promising musical career over, Niki (Woodall) works across New York with his mentor Harry Horowitz (Hoffman) tuning pianos. One night while working late at a client's house, Niki is disrupted by a security crew trying to drill open a safe in the same house and lends his ear to cracking it without machinery. But when Harry is hospitalised and Niki is left with the bill, he turns to his newfound talent to secure the funds necessary for his boss' recovery, endangering himself and his burgeoning partner Ruthie.

**DISCLOSURE DAY (M)** 150 Mins *Drama*

If you found out we weren't alone, if someone showed you, proved it to you, would that frighten you? This June, the truth belongs to seven billion people. We are coming close to ... Disclosure Day. Directed by Steven Spielberg. Starring Emily Blunt, Colin Firth & Josh O'Connor.

**THE SHEEP DETECTIVES (PG)** 115 Mins *Comedy/Mystery*

George is a shepherd who reads detective novels to his beloved sheep every night, assuming they can't possibly understand. When a mysterious incident disrupts life on the farm, the sheep realise they must become the detectives, follow the clues and prove that even sheep can be brilliant crime-solvers.



SAINTS BASKETBALL CLUB  
PRESENTS  
**MOANA (LIVE ACTION)**  
**WEDNESDAY 8TH JULY**  
DOORS 5.30PM  
FILM 6.30PM  
TICKETS \$16



SCAN TO BOOK

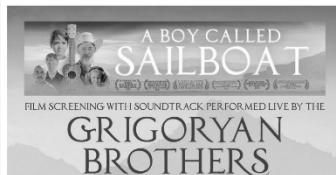
INCLUDES 1 ENTRY INTO  
RAFFLE AND LUCKY SEAT  
PRIZES

EVERYONE WELCOME!

**FRIDAY 17TH JULY**

DOORS 6.30PM  
FILM 7PM - 8.30PM  
Q&A 8.30PM - 8.50PM  
GROUND FLOOR CINEMA

TICKETS FROM \$25  
BOOK ONLINE VIA OUR WEBSITE



SCAN TO BOOK